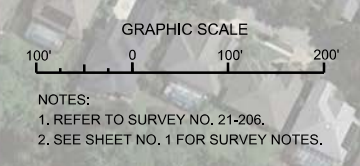


MAP LABEL	AIDS TO NAVIGATION	PLANE COORDINATES		LATITUDE	LONGITUDE
		X	Y		
R*2	DBN-2 (06/21)	605,847	1,690,170	29°31'59.18"	81°09'29.63"
G*3	LT-3 (06/21)	606,564	1,889,660	29°31'54.08"	81°09'21.51"
R*4	DBN-4 (06/21)	606,459	1,889,555	29°31'53.04"	81°09'22.69"



US Army Corps of Engineers
Jacksonville District
SAFETY ON THIS JOB
DEPENDS ON YOU

DEPARTMENT OF THE ARMY
JACKSONVILLE DISTRICT, CORPS OF ENGINEERS
JACKSONVILLE, FLORIDA

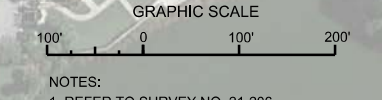
Drawn By: GHR
Checked By: GHR
Designed By: WRM
Drawn By: WRM
File No: W9125P-00-000000
Date: JUN 2021

INTRACOASTAL WATERWAY
JACKSONVILLE TO MIAMI, FLORIDA
FLAGLER COUNTY
**HYDROGRAPHIC EXAM SURVEY FY21
12-FOOT PROJECT**
STA. 70+00 CUT F-20 THRU STA. 17+00 CUT F-21
PLAN

Scale: AS SHOWN
Drawing no. **18**
SHEET 18 OF 32



MAP LABEL	AIDS TO NAVIGATION	PLANE COORDINATES		LATITUDE	LONGITUDE
		X	Y		
G-5'	DBN-5 (06/21)	607.631	1.886.494	29°31'22.76"	-81°09'09.39"



NOTES:
1. REFER TO SURVEY NO. 21-206.
2. SEE SHEET NO. 1 FOR SURVEY NOTES.

P.I. STA. 18+13.72 CUT F-21
P.I. STA. 0+00 CUT F-22
MATCHLINE SHEET NO. 018 STA. 17+00

MATCHLINE SHEET NO. 020 STA. 32+00

RGE 125
RGE 62.5
RGE 0



US Army Corps of Engineers
Jacksonville District

SAFETY ON THIS JOB
DEPENDS ON YOU

DEPARTMENT OF THE ARMY
JACKSONVILLE DISTRICT, CORPS OF ENGINEERS
JACKSONVILLE, FLORIDA

XXXXXXXXXXXXXXXXXXXX.DGN
21-206A-HW42.L_DGN

XXXXXXXXXXXXXXXXXXXX.DGN
21-206A-HW42.L_DGN

XXXXXXXXXXXXXXXXXXXX.DGN
21-206A-HW42.L_DGN

XXXXXXXXXXXXXXXXXXXX.DGN
21-206A-HW42.L_DGN

XXXXXXXXXXXXXXXXXXXX.DGN
21-206A-HW42.L_DGN

Drawn by: **WRM**

Checked by: **WRM**

Date: **JUN 2021**

INTRACOASTAL WATERWAY
JACKSONVILLE TO MIAMI, FLORIDA
FLAGLER COUNTY
12-FOOT PROJECT

STA. 24+00 CUT F-23 THRU STA. 15+00 CUT F-25
PLAN

MAP LABEL	AIDS TO NAVIGATION	PLANE COORDINATES		LATITUDE	LONGITUDE
		X	Y		
R*6"	DBN-5 (06/21)	608,484	11883,205	29°30'50.21"	81°08'59.68"
G*7"	DBN-7 (06/21)	609,109	11881,807	29°30'58.87"	81°08'52.58"
INFO SIGN	SIGN (06/21)	608,619	11883,274	29°30'50.86"	81°08'58.15"

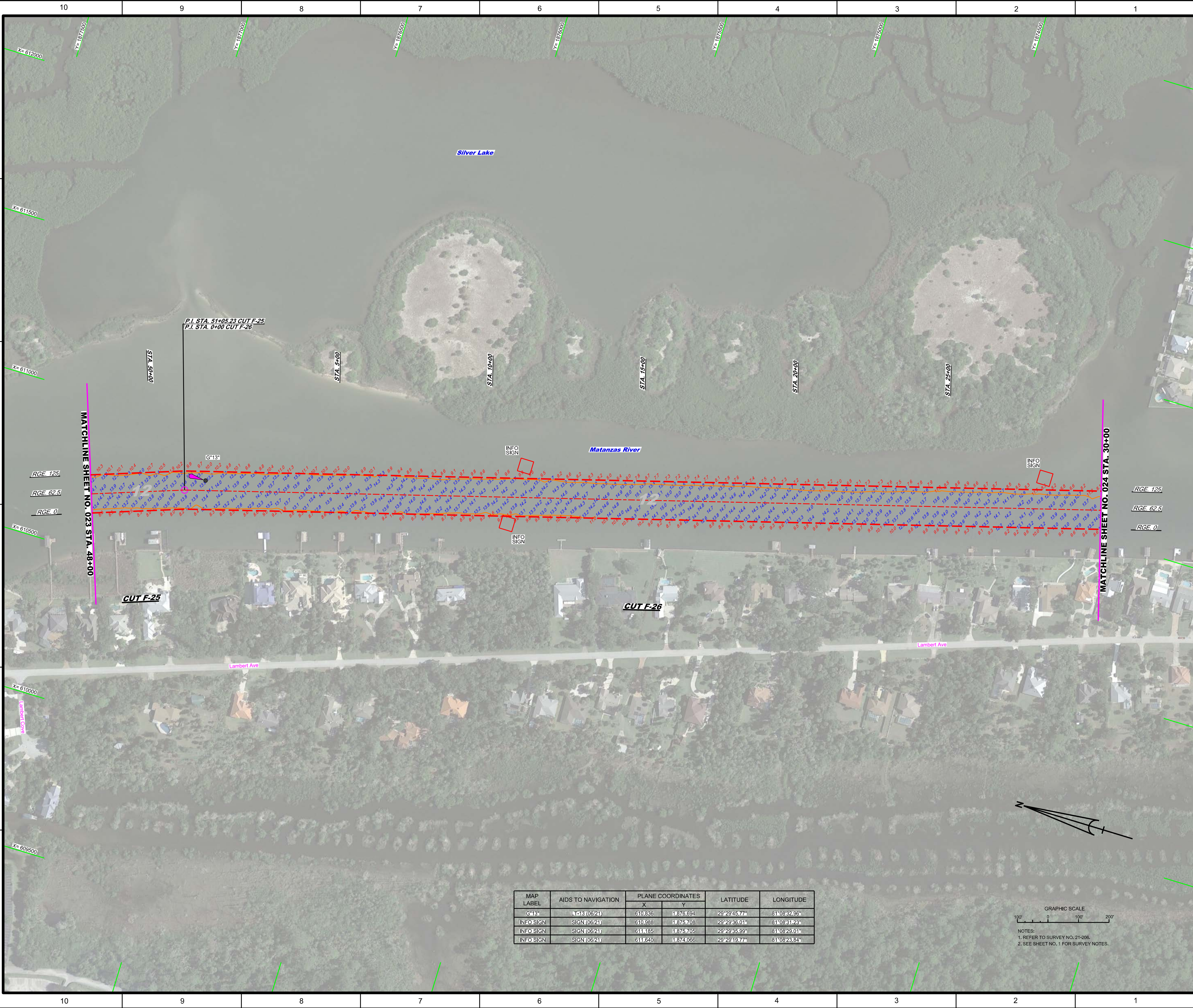
GRAPHIC SCALE
100' 0 100' 200'

NOTES:
1. REFER TO SURVEY NO. 21-206.
2. SEE SHEET NO. 1 FOR SURVEY NOTES.

Scale: AS SHOWN

Drawing no.
21

SHEET 21 OF 32



P.I. STA. 51+05.23 CUT F-25
P.I. STA. 0+00 CUT F-26

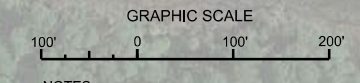
CUT F-25

CUT F-26

MATCHLINE SHEET NO. 023 STA. 48+00

MATCHLINE SHEET NO. 024 STA. 30+00

MAP LABEL	AIDS TO NAVIGATION	PLANE COORDINATES		LATITUDE	LONGITUDE
		X	Y		
G13*	LT-13 (09/21)	610836	11876694	29°29'45.77"	81°08'32.56"
INFO SIGN	SIGN (09/21)	610988	11876706	29°29'36.01"	81°08'31.23"
INFO SIGN	SIGN (09/21)	611185	11876705	29°29'35.59"	81°08'29.01"
INFO SIGN	SIGN (09/21)	611640	11874066	29°29'19.77"	81°08'23.84"



NOTES:
1. REFER TO SURVEY NO. 21-206.
2. SEE SHEET NO. 1 FOR SURVEY NOTES.

US Army Corps of Engineers
Jacksonville District

SAFETY ON THIS JOB
DEPENDS ON YOU

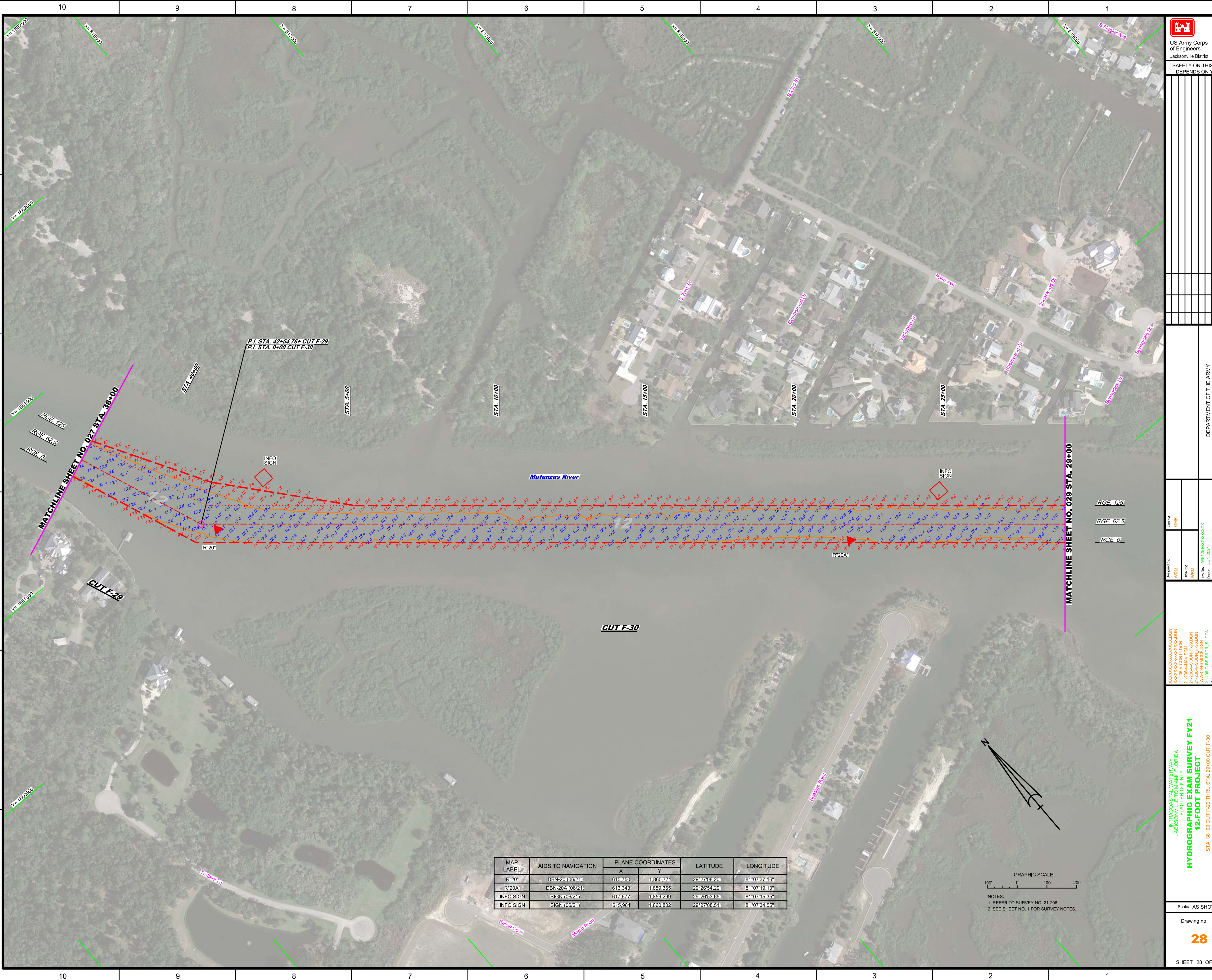
DEPARTMENT OF THE ARMY
JACKSONVILLE DISTRICT, CORPS OF ENGINEERS
JACKSONVILLE, FLORIDA

**INTRACOASTAL WATERWAY
JACKSONVILLE TO MIAMI, FLORIDA
FLAGLER COUNTY
HYDROGRAPHIC EXAM SURVEY FY21
12-FOOT PROJECT**

STA. 48+00 CUT F-25 THRU STA. 30+00 CUT F-26
PLAN

Scale: AS SHOWN
Drawing no.
23

SHEET 23 OF 32

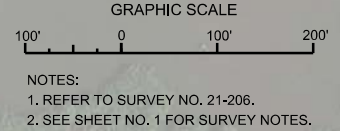


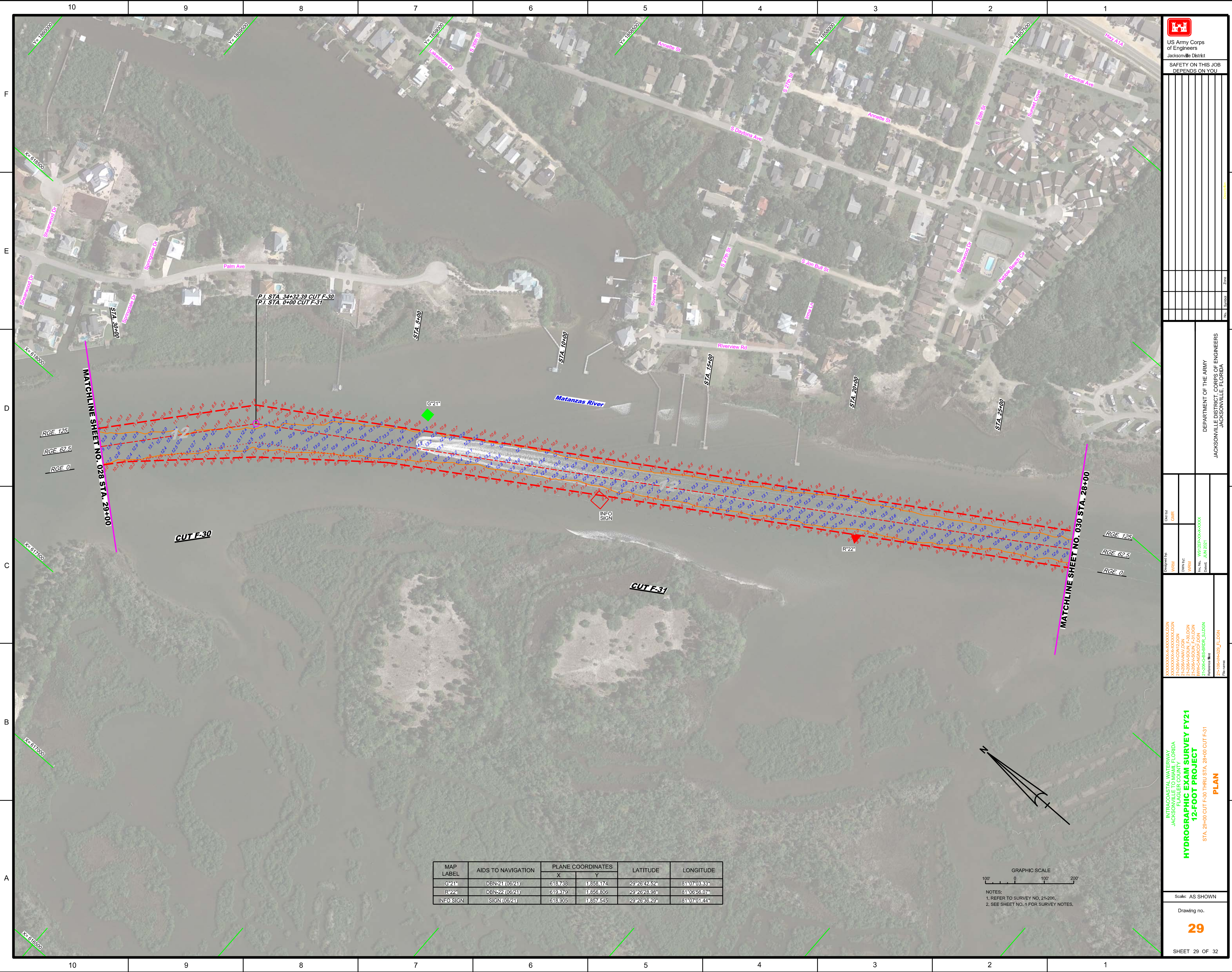
US Army Corps of Engineers
 Jacksonville District
 SAFETY ON THIS JOB
 DEPENDS ON YOU

Call by: GHR Designed by: WRM Drawn by: WRM File No: W922P-00-00000000 Date: JUN 2021	DEPARTMENT OF THE ARMY JACKSONVILLE DISTRICT, CORPS OF ENGINEERS JACKSONVILLE, FLORIDA
---	--

INTRACOASTAL WATERWAY
 JACKSONVILLE TO MIAMI, FLORIDA
 FLAGLER COUNTY
HYDROGRAPHIC EXAM SURVEY FY21
12-FOOT PROJECT
 STA. 39+00 CUT F-29 THRU STA. 29+00 CUT F-30
PLAN

MAP LABEL	AIDS TO NAVIGATION	PLANE COORDINATES		LATITUDE	LONGITUDE
		X	Y		
R*20"	DBN-20 (06/21)	615.750	1.860.771	29°27'08.20"	81°07'37.16"
R*20A"	DBN-20A (06/21)	613.343	1.859.365	29°26'54.28"	81°07'19.13"
INFO SIGN	SIGN (06/21)	617.677	1.859.299	29°26'53.65"	81°07'15.35"
INFO SIGN	SIGN (06/21)	615.981	1.860.802	29°27'08.51"	81°07'34.55"







 US Army Corps of Engineers
 Jacksonville District
 SAFETY ON THIS JOB
 DEPENDS ON YOU

DEPARTMENT OF THE ARMY
 JACKSONVILLE DISTRICT, CORPS OF ENGINEERS
 JACKSONVILLE, FLORIDA

Call by: GHR
 Designed by: WRM
 Drawn by: WRM
 File No.: W12252-000-0000
 Date: JUN 2021

INTRACOASTAL WATERWAY
 JACKSONVILLE TO MIAMI, FLORIDA
 FLAGLER COUNTY
HYDROGRAPHIC EXAM SURVEY FY21
12-FOOT PROJECT
 STA. 29+00 CUT F-30 THRU STA. 28+00 CUT F-31
PLAN

Scale: AS SHOWN
 Drawing no.
29
 SHEET 29 OF 32

MAP LABEL	AIDS TO NAVIGATION	PLANE COORDINATES		LATITUDE	LONGITUDE
		X	Y		
G'21"	DBN-21 (06/21)	618,738	1,858,174	29°26'42.52"	81°07'03.33"
R'22"	DBN-22 (06/21)	619,379	1,856,306	29°26'28.98"	81°06'58.07"
INFO SIGN	SIGN (06/21)	618,905	1,857,545	29°26'38.29"	81°07'01.44"

